

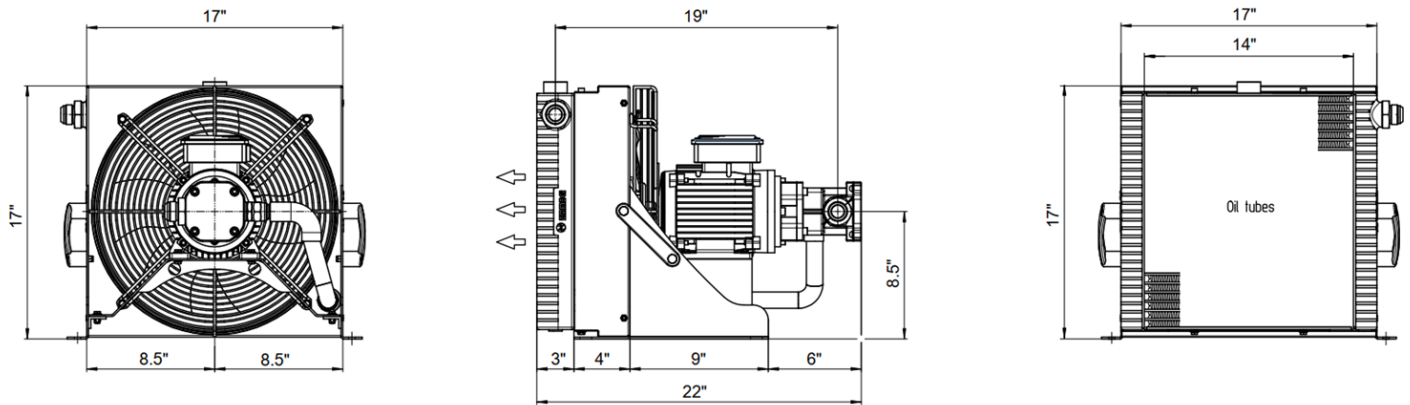
OIL COOLER – AOC 2.0 - Direct Mount

INSTALLATION GUIDE



INSTALLATION INSTRUCTIONS

a. Dimensions



b. Location & Preparation

The heat exchanger mounts **directly** on the mounting brackets (**figure 1**).

Locate hose, thermostat and mounting bracket holes with paper template (attachment 1).

Position the paper mounting template that comes with the cooler on the side of the tank (reservoir) where the cooler will be fastened (figure 2). This template provides locations for two hose holes (2-in.), one 7/16-in. thermostat sensor bulb hole and four 7/16-in. mounting holes. Position the template so that the top edge of the paper is flush with the top edge of the tank wall. This will locate the mounting bracket approximately 1/2-in. below the top of the tank providing clearance for the tank cover. Tape the template in place and mark the hole centers with a center punch.

!CAUTION: Avoid leaking oil! Before drilling, make sure holes are located at least 6-in. above the maximum oil level in the tank with the car at its lowest possible point in the hoistway.



Drill the four mounting holes and the thermostat sensor bulb hole (7/16-in.) and knock out the hose holes (2-in.) in the tank. Take precautions to prevent any metal particles from entering the oil, such as a magnet to catch metal shavings.

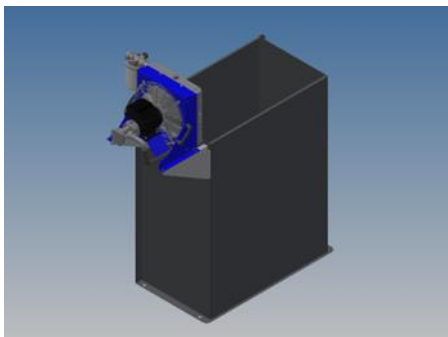


Fig. 1: Typical installation for direct mount of heat exchanger.

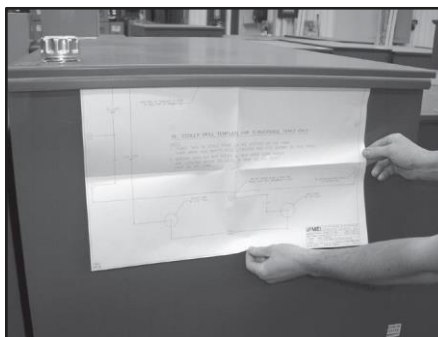


Fig. 2: Use template (supplied) for placement of mounting holes.

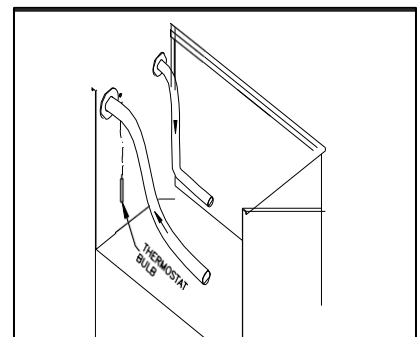


Fig. 3: Sensor bulb placement.

INSTALLATION INSTRUCTIONS

c. Mount Thermostat and Sensor Bulb

You may choose to mount the thermostat on the right or left side of the oil cooler mounting bracket. Attach it using the four #10-24 x 1/2" bolts and locknuts (provided). Set the thermostat, recommended setting is between 110–115°F, conditions may vary.

As per template instructions above the thermostat sensor bulb is routed through a 7/16- in. hole and grommet in the reservoir tank (figure 3). Locate the 9/32-in. I.D. Grommet and install. Do not allow Sensor Bulb to hang loosely in tank. Secure with suitable cable tie or other means.

d. Attach Mounting Bracket

Install the mounting brackets by inserting the bolts and locknuts (provided) in the upper mounting holes on the tank with the nuts inside the tank (figures 4 & 5).

Leave these nuts loose. Lift the mounting brackets into place and position the two key slot holes over the bolts. Pass two bolts through the lower mounting holes in the bracket through the tank and fasten with locknuts. Tighten all fasteners.

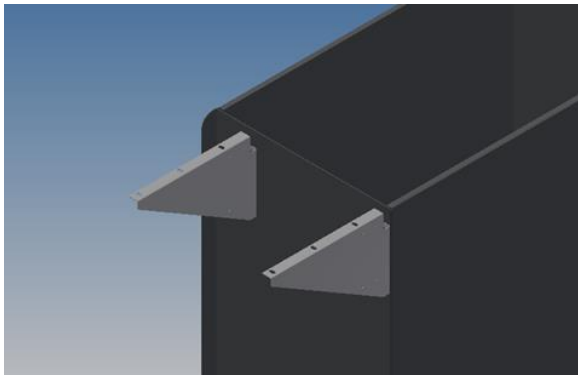


Fig. 4: Installation of mounting brackets directly to power unit.

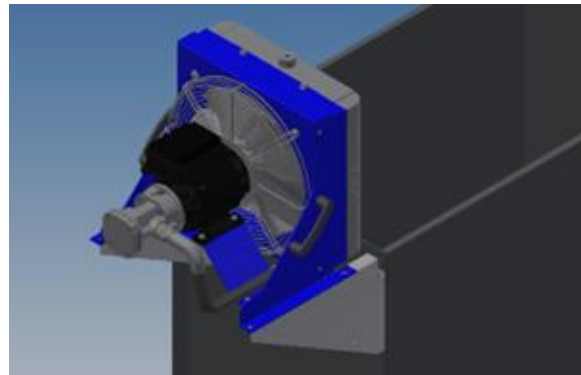


Fig. 5: Heat exchanger shown on mounting bracket (direct mount) only.

!CAUTION: Avoid leaking oil! Before drilling, make sure holes are located at least 6-in. above the maximum oil level in the tank with the car at its lowest possible point in the hoistway.



INSTALLATION INSTRUCTIONS

e. Mount Filter Head & Hoses

Install the filter head and two hoses to the heat exchanger as directed in (figures 6, 7 & 8). See figure 9 for the complete assembly of heat exchanger. Add a drop of lubricating oil, (this will help to seat the connection). Tighten all the fasteners before starting. Do not overtighten as this will damage the flair fitting, (this will weaken the flared tube). Do not use thread tape or sealant when making connections.



Fig. 6: Install 90° radius filter head to heat exchanger.



Fig. 7: Install 90° radius hose to filter head outlet.



Fig. 8: Install 90° radius hose to pump inlet.



Fig. 9: Complete heat exchanger with filter head and two hoses.

INSTALLATION INSTRUCTIONS

f. Electrical Connections

Make all the electrical connections as shown in the wiring diagram (figure 10 or 11). The oil cooler can be electrically connected to a separate 110 VAC or 208-240 VAC single phase 20-amp circuit with breaker. The power supply must have a means of locking it out for maintenance and repair purposes.

!DANGER: Electrical equipment is hazardous. Train personnel to use basic safety precautions. Misuse can result in serious personal injury or death.



Lift the cover off the electric box and wire per your required need below. Included in the bag are 4 yellow eyelets and 1 yellow wire nut. Tighten all as needed.

Jumpers can easily be reconfigured to meet your voltage requirements.

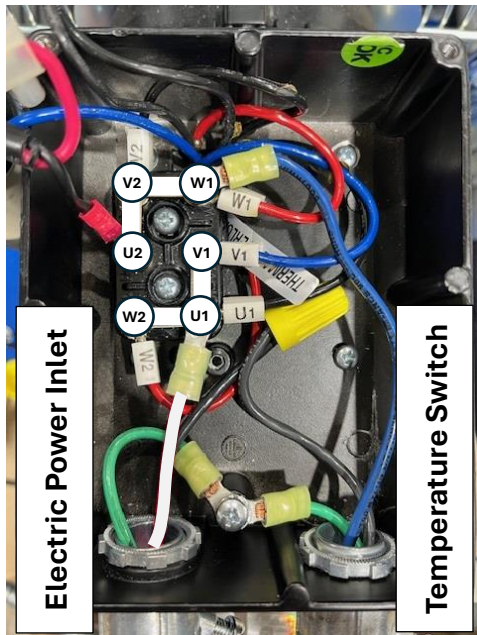


Fig. 10 (110 VAC Wiring)
Neutral Power to U1
Hot Temp. Switch to W1

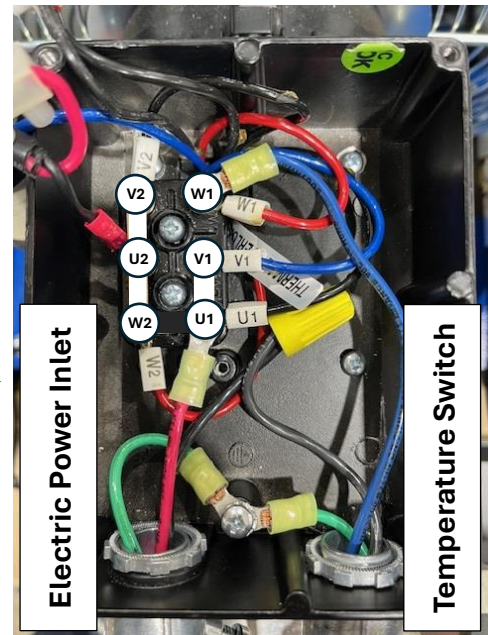


Fig. 11 (220 VAC Wiring)
Hot Power to U1
Hot Temp. Switch to W1

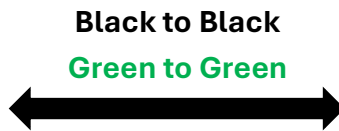


Fig. 10: (110 VAC Wiring)

Fig. 11: (220 VAC Wiring)

The dedicated circuit is provided by others. Follow the state electrical code for your jurisdiction.

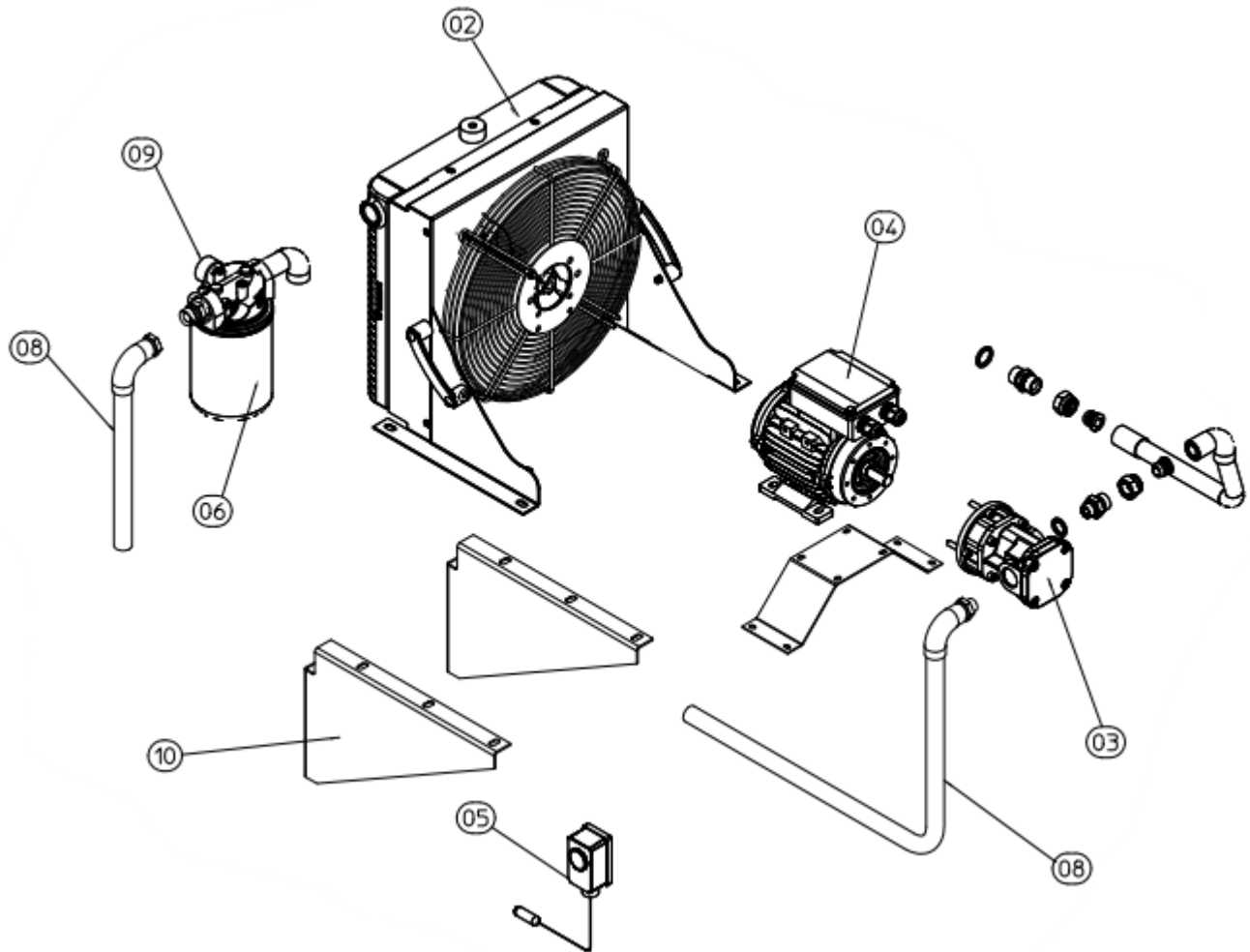
When wiring the temperature switch match the colors (green to green, black to black, blue to blue). The red wire in the temperature switch will not be used. Included in the bag are 4 yellow wire nuts. Tighten all as needed.

g. Warranty

Go to our website meiusa.com under contacts, terms and conditions.

- Manufacturing – Parts
- Failure to follow the installation instructions, or utilizing materials not supplied by MEI will void the warranty.

h. Spare Parts



SPARE PARTS LIST

| Dia. # | Part # | Part Decryption | Qty |
|--------|--------------|--|-----|
| | 31567 | COMPLETE OIL COOLER - AOC 2.0 | 1 |
| 02 | 31583 | HEAT EXCHANGER, W/ ELEMENT, HOUSING, FAN GUARD & BLADE | 1 |
| 03 | 31580 | PUMP, SCREW | 1 |
| 04 | 31577 | MOTOR, 115-208/239V 60HZ | 1 |
| 05 | 890-6929-001 | THERMOSTAT COOLING & HEATING | 1 |
| 06 | 31579 | FILTER HEAD ASSEMBLY | 1 |
| 07 | 1953 | FILTER 10 MICRON (SOLD IN PACKS OF 6) | 1 |
| 08 | 31578 | HOSE ASSEMBLY | 1 |
| 09 | 31582 | GAUGE, PRESSURE, 0-100 PSI, 1/8" NPT | 1 |
| 10 | 31568 | BASE OIL COOLER (2PK) | 1 |
| | | | |